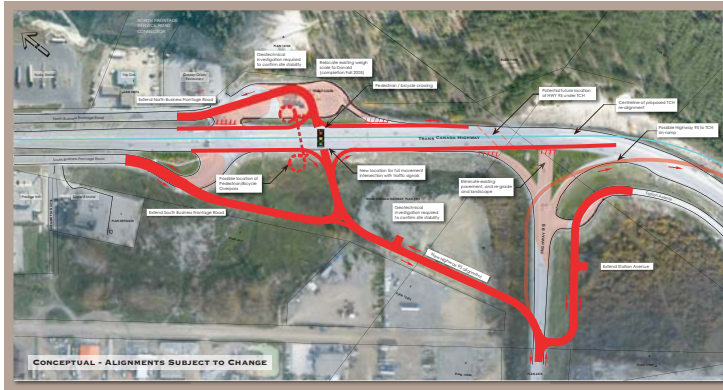


# TCH / HWY 95 INTERSECTION - PREVIOUSLY CONSIDERED ALTERNATIVES

## ALTERNATIVE A



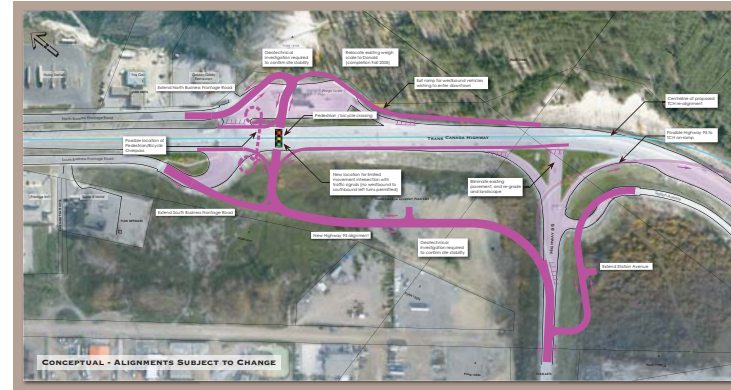
### ADVANTAGES

- Can be staged to future interchange
- Better traffic operations from improved grade on TCH
- Less land impact, and does not require private land
- Facilitates development south of TCH
- Low - moderate cost

### DISADVANTAGES

- Maintains traffic signal on TCH

## ALTERNATIVE B



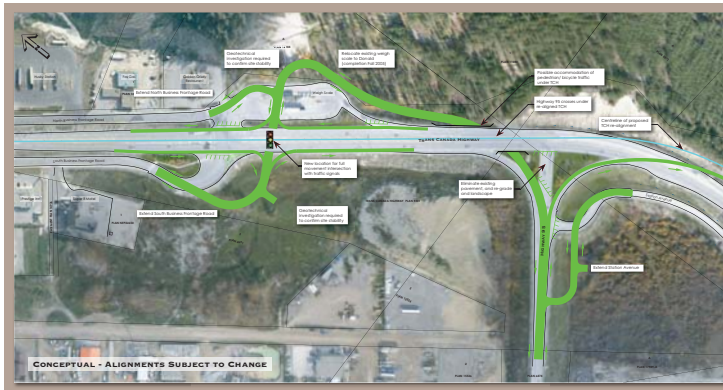
### ADVANTAGES

- Better traffic operations from improved grade on TCH
- Facilitates development south of TCH
- Low - moderate cost

### DISADVANTAGES

- Maintains traffic signal on TCH
- Potential traffic operation problems at North Frontage Road
- Land impacts north of TCH and requires some private land

## ALTERNATIVE C1



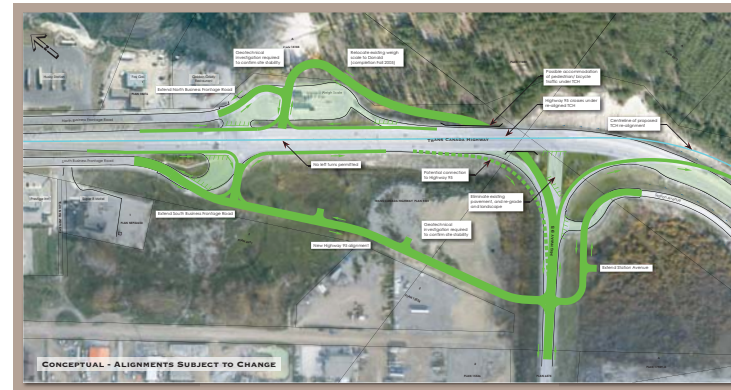
### ADVANTAGES

- Enhanced safety by separating Highway 95 from TCH
- Facilitates pedestrian / bicycle traffic under TCH
- Better traffic operations from improved grade on TCH
- Facilitates development south of TCH

### DISADVANTAGES

- Maintains traffic signal on TCH
- Potential traffic operation problems at North Frontage Road
- Land impacts north of TCH and requires some private land
- High cost

## ALTERNATIVE C2



### ADVANTAGES

- Enhanced safety by removing traffic signal from TCH
- Enhanced safety by separating Highway 95 from TCH
- Facilitates pedestrian / bicycle traffic under TCH
- Better traffic operations from improved grade on TCH
- Facilitates development south of TCH

### DISADVANTAGES

- Circuitous routing for Frontage Road traffic wishing to access opposite sides of TCH
- Land impacts north of TCH and requires some private land
- High cost