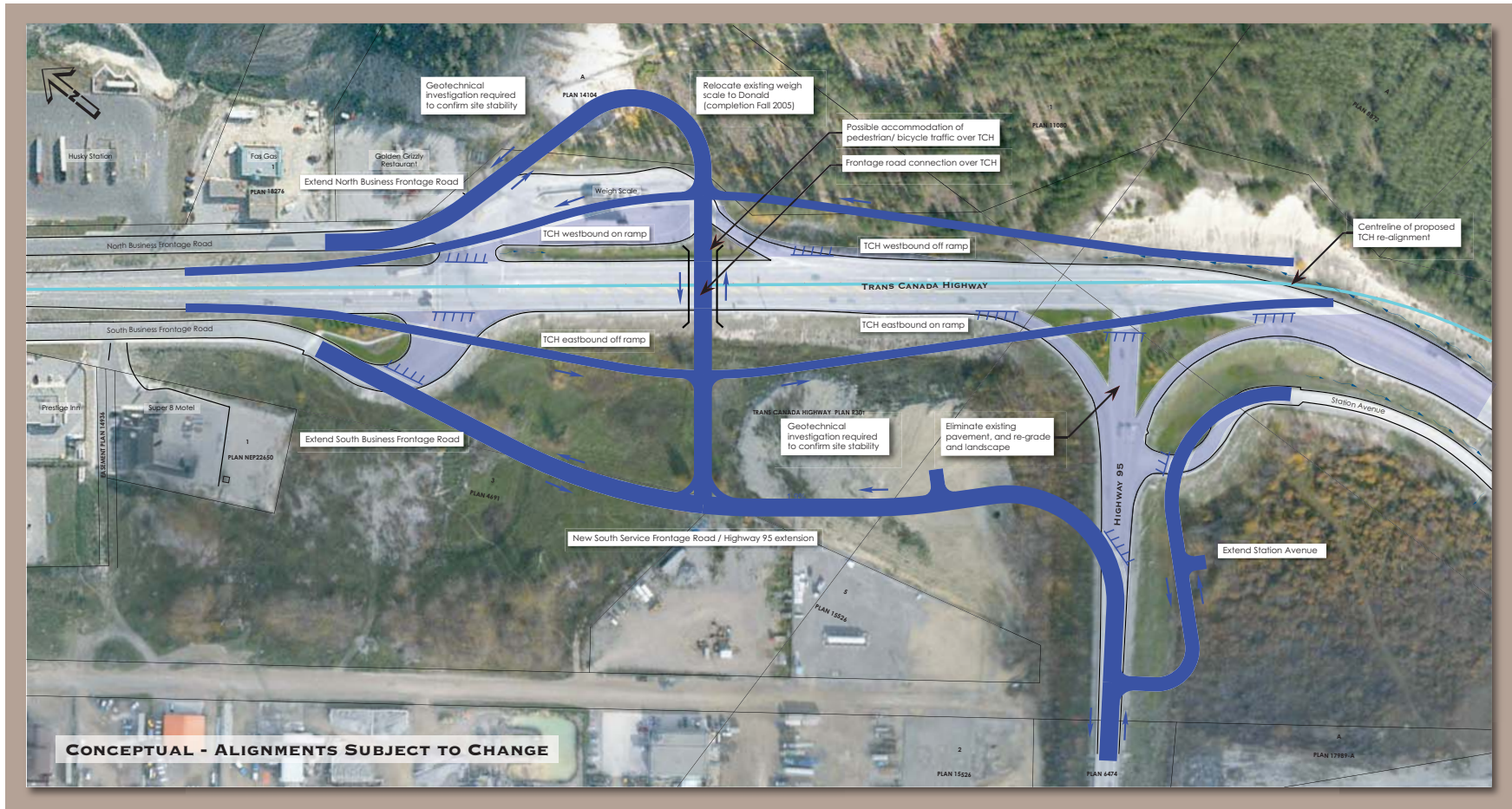


# TCH / HWY 95 INTERSECTION - ALTERNATIVE D



## ADVANTAGES

- Enhanced safety by removing traffic signal from TCH
- Enhanced safety by separating Highway 95 from TCH
- Facilitates pedestrian / bicycle traffic over TCH
- Improved traffic operations at both Frontage Roads
- Better traffic operations from improved grade on TCH

## DISADVANTAGES

- Most land impact and requires some private land
- Less land available for development
- Moderate – high cost